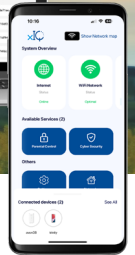
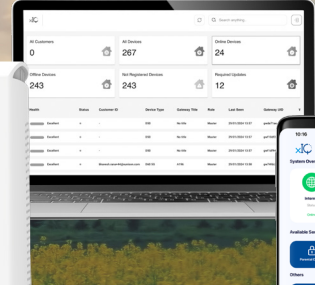
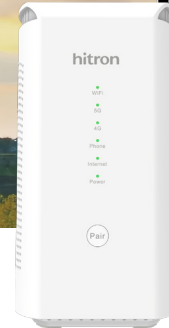




5G Fixed Wireless Solution

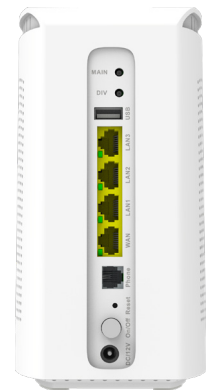


Are you ready to revolutionize your 5G fixed wireless service offerings? Look no further! Our cutting-edge 5G Fixed Wireless Solution in a box is tailored for Internet Service Providers like you, eager to elevate your service and provide seamless connectivity to a diverse range of customers.

Key Features and Benefits

#1 5G Fixed Wireless Gateway with Dual Band WiFi 6

Our gateway is the heart of the system, delivering lightning-fast 5G connectivity to homes and businesses. With dual-band WiFi 6, your customers can enjoy a robust and reliable wireless network for all their devices. Say goodbye to lag and buffering!



Certified by PTCRB and the Four Largest 5G Carriers in the US

Our gateway is PTCRB certified, ensuring compliance with industry standards for wireless connectivity. It's also certified to work seamlessly on major networks, including T-Mobile, AT&T, and US Cellular, guaranteeing a broad coverage footprint.

WiFi Mesh Enabled

Our gateway is not just a gateway; it's also WiFi mesh enabled, providing your customers with expanded coverage and a seamless WiFi experience throughout their homes and businesses.

Compatibility with ARIA2210 Mesh Extenders

For those seeking extended coverage, our solution is fully compatible with Hitron ARIA2210 Mesh Extenders, making it easy to create a powerful and reliable mesh network.

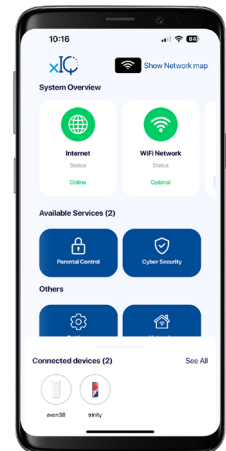
#2 User-Friendly App for Setup and Mesh Network Management

Empower your customers with xIQ, an intuitive app that simplifies the setup process and gives them control over their WiFi Mesh network. From adding new devices to optimizing their network for maximum performance, it's all at their fingertips.

Advanced Features for Privacy and Security

Our end-user app goes beyond the basics with robust features such as:

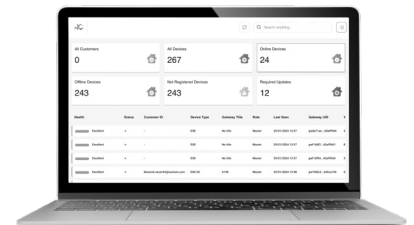
- **Parental Controls:** Manage and restrict internet access for children's devices, ensuring a safe online environment.
- **Basic Security:** Protect your network from cyber threats with built-in security measures, giving your customers peace of mind.
- **Social Media Usage Monitoring:** Our unique feature keeps you informed without invading your household's privacy. Easily view platform-specific social media usage by time spent on each platform, per device, or by individual user.
- **Security Audit Score:** Our gateway consistently examines its security and provides recommendations for strengthening it. This guarantees a resilient defense against potential threats, ensuring your customers' data and devices are always protected.



#3 Cloud Platform for Remote Management

The third component of our solution is the xIQ Cloud Platform, a powerful tool for Internet Service Providers. With this platform, you can:

- **Remotely Monitor 5G Connectivity:** Keep a watchful eye on the 5G connection, ensuring its stability and reliability. Lock 5G channels when needed. Identify and address issues before they impact your customers.
- **Push Firmware Updates:** Seamlessly push firmware updates to gateways and extenders, keeping your network secure and up-to-date.
- **Provision Services:** Streamline the provisioning of new services, saving time and improving customer satisfaction.
- **WiFi Analytics:** Gain valuable insights into WiFi performance within customers' homes, helping to identify and resolve in-home WiFi issues promptly.



Primary Use Cases



Faster Internet for Rural Areas

Offer 5G Fixed Wireless to customers in rural areas who are searching for faster Internet solutions but are not eligible for fiber or other broadband services over 1 Gbps. Our solution bridges the digital divide, providing rural communities with high-speed connectivity they deserve, enabling seamless streaming, remote work, and online education.



Internet Failover

Our 5G Fixed Wireless Solution is not only perfect for small and medium-sized businesses (SMBs) but also for anyone who values uninterrupted Internet connectivity. Whether you're an SMB relying on constant connectivity for your retail Point of Sale (POS) systems or someone working from home, our solution serves as a dependable Internet failover. It ensures that even in the event of primary Internet outages, you stay connected, guaranteeing seamless operations and unwavering customer satisfaction.

Why Choose Our 5G Fixed Wireless Solution?

- **Effortless Setup**
With our user-friendly app, your customers can set up their gateway and WiFi Mesh network in minutes, reducing installation times and increasing customer satisfaction.
- **Reliability and Speed**
Our 5G Fixed Wireless Gateway ensures fast, reliable, and low-latency connectivity, meeting the demands of modern households and businesses.
- **Enhanced Customer Experience**
Provide your customers with the tools they need to manage their WiFi Mesh network, empowering them to enjoy seamless connectivity without the hassle.
- **Minimize Service Calls**
Our cloud platform's proactive monitoring and troubleshooting capabilities mean fewer service calls, reducing your operational costs and boosting customer satisfaction.
- **Competitive Advantage**
Stay ahead of the competition with our comprehensive solution that positions you as a leader in 5G Fixed Wireless services.

Offer a Complete WiFi Mesh Solution with Failover

Are you an Internet Service Provider (ISP) eager to expand your offerings and deliver unmatched value to your customers? Our WiFi Mesh Package offers a comprehensive WiFi mesh solution designed to elevate your services and make you a standout in the market. Central to this package is our Internet Failover feature, ensuring uninterrupted connectivity even in the face of network disruptions. This package includes:

- **FWA Gateway**
Experience lightning-fast Internet access with our 5G Fixed Wireless Gateway equipped with Dual Band WiFi 6. This gateway ensures homes and businesses enjoy top-tier connectivity.
- **2 Dual-band WiFi 6 Mesh Extenders**
Expand your coverage to every nook and cranny of your customers' spaces, guaranteeing a seamless and robust WiFi experience throughout. Even in the event of Internet failure, these mesh extenders will keep the network running smoothly.
- **xIQ App and Backend Platform**
Empower your customers with our intuitive app for easy setup and network management. Utilize the powerful xIQ Cloud Platform to remotely monitor your customer's network, push firmware updates, provision services, and access WiFi analytics.



About Hitron

Founded in 1986, Hitron Technologies has a rich history of over three decades. Throughout this journey, we have consistently leveraged our research and development capabilities to pioneer new technologies in the field of networking and communications. Our dedication to innovation has enabled us to adapt to the ever-evolving demands of the digital age.

Key Strengths

- **Chosen by some of the Largest ISPs in the US**
What sets Hitron apart is our distinguished clientele, as we proudly count some of the largest ISPs in the US among our esteemed customers. Giants like Comcast, Charter, and Viasat have chosen Hitron as their trusted partner for networking equipment and solutions.
- **Part of BenQ Group**
As a constituent company within the BenQ Group, Hitron benefits from synergies with other innovative companies under the same umbrella, fostering collaboration and enhancing our competitive edge.
- **Customer-Centric Approach**
Hitron is committed to delivering exceptional value to our customers through reliable products, responsive support, and a deep understanding of our customers' unique requirements.

