

MoCA 2.0 Coax-to-Ethernet Adapter

MoCA 2.0 and Giga Ethernet

MoCA 2.0 D-band

700Mbps PHY data rate



EASY INSTALLATION

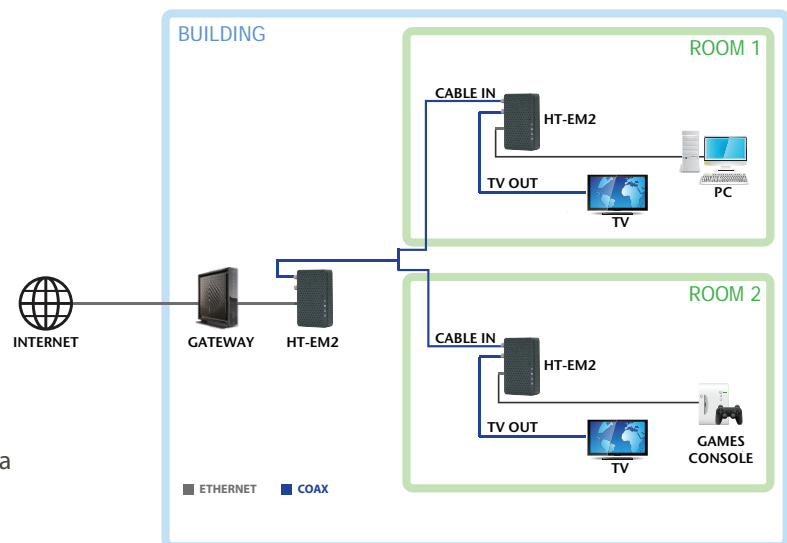
The HT-EM2 comes with two Coax F-type connectors and one Ethernet RJ-45 connector. Simply connect HT-EM2 to coaxial outlet, it should establish MoCA link automatically with the gateway. The Ethernet port is now ready to use.

MOCA 2.0 HIGHEST PERFORMANCE ENTERTAINMENT NETWORKING

The HT-EM2 enables high-bandwidth traffic to be seamlessly distributed across the end-user's home or office.

KEY FEATURES

- MoCA 2.0 standard for highest performance of entertainment networking
- Compact size (110mm (W) x 70mm (H) x 25mm (D)) for home application
- Upgradable software over web-based GUI
- Well-defined LEDs clearly display device and network status
- Hardware DES and AES Encryption to keep your data safe from unauthorized access



SPECIFICATION

Connectivity

- 2x RF F-type female 75Ω connector (to wall and to TV)
- RJ-45 Ethernet port 10/100/1000 Mbps (Auto-MDI/MDIX)

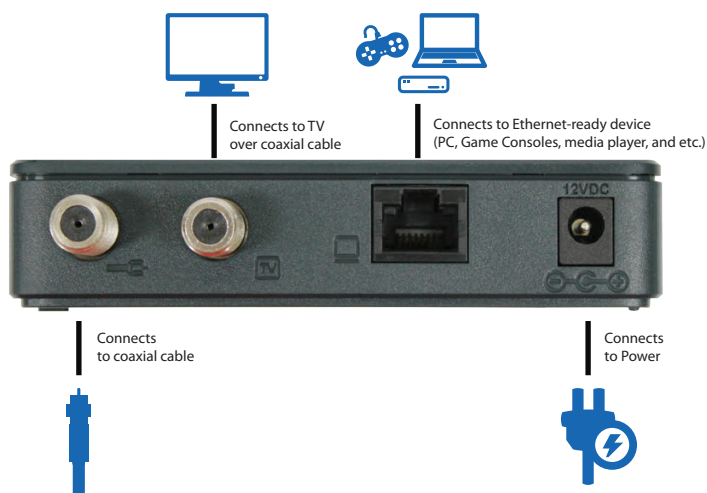
Management

- Web-based GUI control configuration and management
- Dual-color LEDs clearly display network status

MoCA 2.0 Reception / Transmitter-Modulation

- Demodulation/ Modulation: BPSK, QPSK, 8QAM, 16QAM, 32QAM, 64QAM, 128QAM, 256QAM, 512QAM, 1024QAM
- Data Rate: 700 Mbps (Baseline Mode)
- Throughput: 400+Mbps (Baseline Mode) / 500+Mbps (Turbo Mode, Point to Point Configuration)
- Frequency (center frequencies): 1025 ~ 1625Mhz
- Channel Bandwidth: 100 MHz
- Link Privacy: 56-bit DES and 128-bit AES hardware encryptions for network security and password

Simple installation



Mechanical

- 4 status LEDs (Power, LAN activity, LAN link, MoCA)
- Dimensions: 110mm (W) x 70mm (H) x 25mm (D)
- Weight: 500g

Environmental

- Power Input: DC 12V / 0.5A
- Power Consumption: 5W (Max)
- Operating Temperature: 0 ~ +45 °C
- Operating Humidity: 10 to 90% RH
- Storage Temperature: -30 ~ +70 °C
- Surge Protection: RF input sustains at least 4KV; Ethernet RJ-45 sustains at least 4KV

Compliance Certificates

- RoHS Compliant
- FCC/IC